

**TCEA1 Rabbit mAb [Y8AP]**

**Cat NO. :A69673**

**Information:**

Applications	Reactivity:	UniProt ID:	MW(kDa)	Host	Isotype	Size
WB,IHC,ICC/IF	H,M,R	P23193	40KDa	Rabbit	IgG	50ul,100ul,200ul

**Applications detail:**

Application	Dilution
WB	1:1000-2000
IHC	1:100
ICC/IF	1:100
The optimal dilutions should be determined by the end user	

**Conjugate:**

UnConjugate

**Form:**

Liquid

**sensitivity:**

Endogenous

**Purification:**

Protein A purification

**Specificity:**

Antibody is produced by immunizing animals with a synthetic peptide of human TCEA1.

**Storage buffer and conditions:**

Antibody store in 10 mM PBS, 0.5mg/ml BSA, 50% glycerol (buffer) .

Shipped at 4°C. Store at -20°C or -80°C.

Products are valid for one natural year of receipt. Avoid repeated freeze / thaw cycles.

**Tissue specificity:**

**Subcellular location:**

Nucleus.

**Function:**

Necessary for efficient RNA polymerase II transcription elongation past template-encoded arresting sites. The arresting sites in DNA have the property of trapping a certain fraction of elongating RNA polymerases that pass through, resulting in locked ternary complexes. Cleavage of the nascent transcript by S-II allows the resumption of elongation from the new 3'-terminus.

**Introduction:** **WB:** Western Blot **IP:** Immunoprecipitation **IHC:** Immunohistochemistry **ChIP:** Chromatin Immunoprecipitation **ICC/IF:** Immunocytochemistry/Immunofluorescence **F:** Flow Cytometry

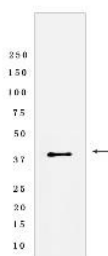
**Cross Reactivity:** **H:** human **M:** mouse **R:** rat **Hm:** hamster **Mk:** monkey **Vir:** virus **Ml:** mink **C:** chicken **Dm:** D. melanogaster **X:** Xenopus **Z:** zebrafish **B:** bovine **Dg:** dog **Pg:** pig **Hr:** horse

**For Research Use Only. Not For Use In Diagnostic Procedures.**

## Validation Data:

### TCEA1 Rabbit mAb [Y8AP] Images

---



Western blot (SDS PAGE) analysis of extracts from SP2/0 cells. Using TCEA1 Rabbit mAb [Y8AP] at dilution of 1:1000 incubated at 4°C over night.

View more information on <http://naturebios.com>

**IMPORTANT:** For western blots, incubate membrane with diluted primary antibody in 1% w/v Milk, 1X TBST at 4°C overnight.