

**IL-15RA Mouse mAb[J5ZG]**

**Cat NO. :A72262**

**Information:**

Applications	Reactivity:	UniProt ID:	MW(kDa)	Host	Isotype	Size
WB	H	Q13261	55kDa	Mouse	IgG	100ul,200ul

**Applications detail:**

Application	Dilution
WB	1:1000-2000
The optimal dilutions should be determined by the end user	

**Conjugate:**

UnConjugate

**Form:**

Liquid

**sensitivity:**

Endogenous

**Purification:**

Protein A purification

**Specificity:**

Antibody is produced by immunizing animals with a synthetic peptide of human IL-15RA.

**Storage buffer and conditions:**

Antibody store in 10 mM PBS, 0.5mg/ml BSA, 50% glycerol (buffer) .

Shipped at 4°C. Store at-20°C or -80°C.

Products are valid for one natural year of receipt.Avoid repeated freeze / thaw cycles.

**Tissue specificity:**

Expressed in neutrophils (at protein level) (PubMed:15123770). Expressed in fetal brain with higher expression in the hippocampus and cerebellum than in cortex and thalamus (PubMed:12114302). Higher

**Subcellular location:**

Membrane,Single-pass type I membrane protein. Nucleus membrane,Single-pass type I membrane protein. Cell surface.

**Function:**

**Introduction:** **WB:** Western Blot **IP:** Immunoprecipitation **IHC:** Immunohistochemistry **ChIP:** Chromatin Immunoprecipitation **ICC/IF:** Immunocytochemistry/Immunofluorescence **F:** Flow Cytometry

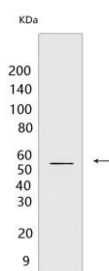
**Cross Reactivity:** **H:** human **M:** mouse **R:** rat **Hm:** hamster **Mk:** monkey **Vir:** virus **Ml:** mink **C:** chicken **Dm** D. melanogaster **X:** Xenopus **Z:** zebrafish **B:** bovine **Dg:** dog **Pg:** pig **Hr:** horse

**For Research Use Only. Not For Use In Diagnostic Procedures.**

High-affinity receptor for interleukin-15 (PubMed:8530383). Can signal both in cis and trans where IL15R from one subset of cells presents IL15 to neighboring IL2RG-expressing cells (By similarity). In neutrophils, binds and activates kinase SYK in response to IL15 stimulation (PubMed:15123770). In neutrophils, required for IL15-induced phagocytosis in a SYK-dependent manner (PubMed:15123770). Expression of different isoforms may alter or interfere with signal transduction (PubMed:10480910)... [Isoform 5]: Does not bind IL15.. [Isoform 6]: Does not bind IL15.. [Isoform 7]: Does not bind IL15.. [Isoform 8]: Does not bind IL15..

## Validation Data:

### IL-15RA Mouse mAb[J5ZG] Images



Western blot (SDS PAGE) analysis of extracts from Raji cells. Using IL-15RA Mouse mAb IgG [J5ZG] at dilution of 1:1000 incubated at 4°C over night.

View more information on <http://naturebios.com>

**IMPORTANT:** For western blots, incubate membrane with diluted primary antibody in 1% w/v Milk, 1X TBST at 4°C overnight.