

SAR1B Mouse mAb[5VJM]

Cat NO. :A75327

Information:

Applications	Reactivity:	UniProt ID:	MW(kDa)	Host	Isotype	Size
WB	H,M,R	Q9Y6B6	22kda	Mouse	IgG	100ul,200ul

Applications detail:

Application	Dilution
WB	1:1000-2000
The optimal dilutions should be determined by the end user	

Conjugate:

UnConjugate

Form:

Liquid

sensitivity:

Endogenous

Purification:

Protein A purification

Specificity:

Antibody is produced by immunizing animals with a synthetic peptide of human SAR1B.

Storage buffer and conditions:

Antibody store in 10 mM PBS, 0.5mg/ml BSA, 50% glycerol (buffer) .

Shipped at 4°C. Store at -20°C or -80°C.

Products are valid for one natural year of receipt.Avoid repeated freeze / thaw cycles.

Tissue specificity:

Expressed in many tissues including small intestine, liver, muscle and brain..

Subcellular location:

Endoplasmic reticulum membrane,Peripheral membrane protein. Golgi apparatus, Golgi stack membrane,Peripheral membrane protein.

Function:

Introduction: **WB:** Western Blot **IP:** Immunoprecipitation **IHC:** Immunohistochemistry **ChIP:** Chromatin Immunoprecipitation **ICC/IF:** Immunocytochemistry/Immunofluorescence **F:** Flow Cytometry

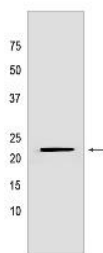
Cross Reactivity: **H:** human **M:** mouse **R:** rat **Hm:** hamster **Mk:** monkey **Vir:** virus **Ml:** mink **C:** chicken **Dm** D. melanogaster **X:** Xenopus **Z:** zebrafish **B:** bovine **Dg:** dog **Pg:** pig **Hr:** horse

For Research Use Only. Not For Use In Diagnostic Procedures.

GTP-binding protein involved in transport from the endoplasmic reticulum to the Golgi apparatus (By similarity). Activated by the guanine nucleotide exchange factor PREB (By similarity). Involved in the selection of the protein cargo and the assembly of the COPII coat complex (By similarity). Synergizes with the cargo receptor SURF4 to mediate the export of lipoproteins from the endoplasmic reticulum, thereby regulating lipoprotein delivery and the maintenance of lipid homeostasis (PubMed:33186557)..

Validation Data:

SAR1B Mouse mAb[5VJM] Images



Western blot (SDS PAGE) analysis of extracts from HeLa cells. Using SAR1B Mouse mAb IgG [5VJM] at dilution of 1:1000 incubated at 4°C over night.

View more information on <http://naturebios.com>

IMPORTANT: For western blots, incubate membrane with diluted primary antibody in 1% w/v Milk, 1X TBST at 4°C overnight.