

**Aly/Ref Rabbit mAb [J6M8]**

**Cat NO. :A77175**

**Information:**

Applications	Reactivity:	UniProt ID:	MW(kDa)	Host	Isotype	Size
WB,IHC,ICC/IF	H,M,R	Q86V81	27 kDa	Rabbit	IgG	100ul,200ul

**Applications detail:**

Application	Dilution
WB	1:1000-2000
IHC	1:100
ICC/IF	1:100
The optimal dilutions should be determined by the end user	

**Conjugate:**

UnConjugate

**Form:**

Liquid

**sensitivity:**

Endogenous

**Purification:**

Protein A purification

**Specificity:**

Antibody is produced by immunizing animals with a synthetic peptide at the sequence of human Aly/Ref

**Storage buffer and conditions:**

Antibody store in 10 mM PBS, 0.5mg/ml BSA, 50% glycerol (buffer) .

Shipped at 4°C. Store at -20°C or -80°C.

Products are valid for one natural year of receipt.Avoid repeated freeze / thaw cycles.

**Tissue specificity:**

Expressed in a wide variety of cancer types..

**Subcellular location:**

Nucleus. Nucleus speckle. Cytoplasm.

**Function:**

Export adapter involved in nuclear export of spliced and unspliced mRNA. Binds mRNA which is thought to be transferred to the NXF1-NXT1 heterodimer for export (TAP/NFX1 pathway) (PubMed:15833825, PubMed:15998806, PubMed:17190602, PubMed:11707413, PubMed:11675789, PubMed:11979277, PubMed:18364396, PubMed:22144908, PubMed:22893130, PubMed:23222130, PubMed:25662211). Component of the TREX complex which is thought to couple mRNA transcription, processing and nuclear export, and specifically associates with spliced mRNA and not with unspliced pre-mRNA (PubMed:15833825, PubMed:15998806, PubMed:17190602). TREX is recruited to spliced mRNAs by a transcription-independent

**Introduction:** **WB:** Western Blot **IP:** Immunoprecipitation **IHC:** Immunohistochemistry **ChIP:** Chromatin Immunoprecipitation **ICC/IF:** Immunocytochemistry/Immunofluorescence **F:** Flow Cytometry

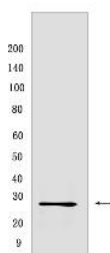
**Cross Reactivity:** **H:** human **M:** mouse **R:** rat **Hm:** hamster **Mk:** monkey **Vir:** virus **Ml:** mink **C:** chicken **Dm** D. melanogaster **X:** Xenopus **Z:** zebrafish **B:** bovine **Dg:** dog **Pg:** pig **Hr:** horse

**For Research Use Only. Not For Use In Diagnostic Procedures.**

mechanism, binds to mRNA upstream of the exon-junction complex (EJC) and is recruited in a splicing- and cap-dependent manner to a region near the 5' end of the mRNA where it functions in mRNA export to the cytoplasm (PubMed:15833825, PubMed:15998806, PubMed:17190602). TREX recruitment occurs via an interaction between ALYREF/THOC4 and the cap-binding protein NCBP1 (PubMed:15833825, PubMed:15998806, PubMed:17190602). The TREX complex is essential for the export of Kaposi's sarcoma-associated herpesvirus (KSHV) intronless mRNAs and infectious virus production, ALYREF/THOC4 mediates the recruitment of the TREX complex to the intronless viral mRNA (PubMed:18974867). Required for TREX complex assembly and for linking DDX39B to the cap-binding complex (CBC) (PubMed:15998806, PubMed:17984224). In conjunction with THOC5 functions in NXF1-NXT1 mediated nuclear export of HSP70 mRNA, both proteins enhance the RNA binding activity of NXF1 and are required for NXF1 localization to the nuclear rim (PubMed:19165146). Involved in the nuclear export of intronless mRNA, proposed to be recruited to intronless mRNA by ATP-bound DDX39B. Involved in transcription elongation and genome stability (PubMed:12438613, PubMed:17984224). Involved in mRNA export of C5-methylcytosine (m5C)-containing mRNAs: specifically recognizes and binds m5C mRNAs and mediates their nucleo-cytoplasmic shuttling (PubMed:28418038).., Acts as chaperone and promotes the dimerization of transcription factors containing basic leucine zipper (bZIP) domains and thereby promotes transcriptional activation..

## Validation Data:

### Aly/Ref Rabbit mAb [J6M8] Images



Western blot (SDS PAGE) analysis of extracts from PC-3 cells. Using Aly/RefRabbit mAb [J6M8] at dilution of 1:1000 incubated at 4°C over night.

View more information on <http://naturebios.com>

**IMPORTANT:** For western blots, incubate membrane with diluted primary antibody in 1% w/v Milk, 1X TBST at 4°C overnight.