

**SLC9A9 Mouse mAb[86SD]**

**Cat NO. :A77215**

**Information:**

Applications	Reactivity:	UniProt ID:	MW(kDa)	Host	Isotype	Size
WB,IHC,ICC/IF	H,M,R	Q8IVB4	73kDa	Mouse	IgG	100ul,200ul

**Applications detail:**

Application	Dilution
WB	1:1000-2000
IHC	1:100
ICC/IF	1:100
The optimal dilutions should be determined by the end user	

**Conjugate:**

UnConjugate

**Form:**

Liquid

**sensitivity:**

Endogenous

**Purification:**

Protein A purification

**Specificity:**

Antibody is produced by immunizing animals with a synthetic peptide of human SLC9A9.

**Storage buffer and conditions:**

Antibody store in 10 mM PBS, 0.5mg/ml BSA, 50% glycerol (buffer) .

Shipped at 4°C. Store at-20°C or -80°C.

Products are valid for one natural year of receipt.Avoid repeated freeze / thaw cycles.

**Tissue specificity:**

Ubiquitously expressed in all tissues tested. Expressed at highest levels in heart and skeletal muscle, followed by placenta, kidney, and liver. Expressed in the brain, in the medulla and spinal

**Subcellular location:**

Late endosome membrane,Multi-pass membrane protein.

**Function:**

**Introduction:** **WB:** Western Blot **IP:** Immunoprecipitation **IHC:** Immunohistochemistry **ChIP:** Chromatin Immunoprecipitation **ICC/IF:** Immunocytochemistry/Immunofluorescence **F:** Flow Cytometry

**Cross Reactivity:** **H:** human **M:** mouse **R:** rat **Hm:** hamster **Mk:** monkey **Vir:** virus **Ml:** mink **C:** chicken **Dm** D. melanogaster **X:** Xenopus **Z:** zebrafish **B:** bovine **Dg:** dog **Pg:** pig **Hr:** horse

**For Research Use Only. Not For Use In Diagnostic Procedures.**

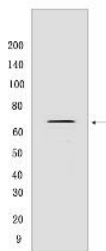
---

May act in electroneutral exchange of protons for Na(+) across membranes. Involved in the effusion of Golgi luminal H(+) in exchange for cytosolic cations. Involved in organelle ion homeostasis by contributing to the maintenance of the unique acidic pH values of the Golgi and post-Golgi compartments in the cell..

## Validation Data:

### SLC9A9 Mouse mAb[86SD] Images

---



Western blot (SDS PAGE) analysis of extracts from HeLa cells. Using SLC9A9 Mouse mAb IgG [86SD] at dilution of 1:1000 incubated at 4°C over night.

View more information on <http://naturebios.com>

**IMPORTANT:** For western blots, incubate membrane with diluted primary antibody in 1% w/v Milk, 1X TBST at 4°C overnight.