

POR1 Rabbit mAb [56S8]

Cat NO. :A77851

Information:

Applications	Reactivity:	UniProt ID:	MW(kDa)	Host	Isotype	Size
WB,IHC,ICC/IF	H	P53365	38 kDa	Rabbit	IgG	100ul,200ul

Applications detail:

Application	Dilution
WB	1:1000-2000
IHC	1:100
ICC/IF	1:100
The optimal dilutions should be determined by the end user	

Conjugate:

UnConjugate

Form:

Liquid

sensitivity:

Endogenous

Purification:

Protein A purification

Specificity:

Antibody is produced by immunizing animals with a synthetic peptide at the sequence of human POR1

Storage buffer and conditions:

Antibody store in 10 mM PBS, 0.5mg/ml BSA, 50% glycerol (buffer) .

Shipped at 4°C. Store at -20°C or -80°C.

Products are valid for one natural year of receipt.Avoid repeated freeze / thaw cycles.

Tissue specificity:

Subcellular location:

Golgi apparatus. Golgi apparatus, trans-Golgi network membrane.

Function:

Plays a role in constitutive metalloproteinase (MMP) secretion from the trans Golgi network (PubMed:26507660). May have important functions during vesicle biogenesis at certain cargo subdomains, which could be predominantly utilized by secreted MMPs, such as MMP7 and MMP2 (PubMed:26507660). Also involved in autophagy by regulating the starvation-dependent trafficking of ATG9A vesicles which deliver the phosphatidylinositol 4-kinase beta (PI4KB) to the autophagosome initiation site (PubMed:31204568, PubMed:30917996). Involved in phagophore growth during mitophagy by regulating ATG9A trafficking to

Introduction: **WB:** Western Blot **IP:** Immunoprecipitation **IHC:** Immunohistochemistry **ChIP:** Chromatin Immunoprecipitation **ICC/IF:** Immunocytochemistry/Immunofluorescence **F:** Flow Cytometry

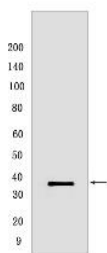
Cross Reactivity: **H:** human **M:** mouse **R:** rat **Hm:** hamster **Mk:** monkey **Vir:** virus **Ml:** mink **C:** chicken **Dm** D. melanogaster **X:** Xenopus **Z:** zebrafish **B:** bovine **Dg:** dog **Pg:** pig **Hr:** horse

For Research Use Only. Not For Use In Diagnostic Procedures.

mitochondria (PubMed:33773106). In addition, plays a role in NF-kappa-B inhibition by interacting with IKBKB and IKBKG (PubMed:26296658)..

Validation Data:

POR1 Rabbit mAb [56S8] Images



Western blot (SDS PAGE) analysis of extracts from MCF-7 cells. Using POR1 Rabbit mAb [56S8] at dilution of 1:1000 incubated at 4°C over night.

View more information on <http://naturebios.com>

IMPORTANT: For western blots, incubate membrane with diluted primary antibody in 1% w/v Milk, 1X TBST at 4°C overnight.