

**Carbonic anhydrase 2/CA2 Rabbit mAb
[1R57]**

Cat NO. :A84315

Information:

Applications	Reactivity:	UniProt ID:	MW(kDa)	Host	Isotype	Size
WB,IHC	H,M,R	P00918	29 kDa	Rabbit	IgG	100ul,200ul

Applications detail:

Application	Dilution
WB	1:1000-2000
IHC	1:100
The optimal dilutions should be determined by the end user	

Conjugate:

UnConjugate

Form:

Liquid

sensitivity:

Endogenous

Purification:

Protein A purification

Specificity:

Antibody is produced by immunizing animals with a synthetic peptide at the sequence of human Carbonic anhydrase 2/CA2

Storage buffer and conditions:

Antibody store in 10 mM PBS, 0.5mg/ml BSA, 50% glycerol (buffer) .

Shipped at 4°C. Store at-20°C or -80°C.

Products are valid for one natural year of receipt.Avoid repeated freeze / thaw cycles.

Tissue specificity:

Subcellular location:

Cytoplasm. Cell membrane.

Function:

Introduction: **WB:** Western Blot **IP:** Immunoprecipitation **IHC:** Immunohistochemistry **ChIP:** Chromatin Immunoprecipitation **ICC/IF:** Immunocytochemistry/Immunofluorescence **F:** Flow Cytometry

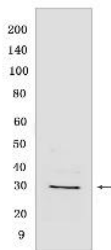
Cross Reactivity: **H:** human **M:** mouse **R:** rat **Hm:** hamster **Mk:** monkey **Vir:** virus **Ml:** mink **C:** chicken **Dm** D. melanogaster **X:** Xenopus **Z:** zebrafish **B:** bovine
Dg: dog **Pg:** pig **Hr:** horse

For Research Use Only. Not For Use In Diagnostic Procedures.

Catalyzes the reversible hydration of carbon dioxide (PubMed:1909891, PubMed:1910042, PubMed:1336460, PubMed:8485129, PubMed:8399159, PubMed:8218160, PubMed:8262987, PubMed:8451242, PubMed:7901850, PubMed:7761440, PubMed:8639494, PubMed:9265618, PubMed:17330962, PubMed:9398308, PubMed:11327835, PubMed:12056894, PubMed:17346964, PubMed:12171926, PubMed:15453828, PubMed:16214338, PubMed:15865431, PubMed:16106378, PubMed:15300855, PubMed:15667203, PubMed:18942852, PubMed:11831900, PubMed:17251017). Can also hydrate cyanamide to urea (PubMed:10550681, PubMed:11015219). Stimulates the chloride-bicarbonate exchange activity of SLC26A6 (PubMed:15990874). Essential for bone resorption and osteoclast differentiation (PubMed:15300855). Involved in the regulation of fluid secretion into the anterior chamber of the eye. Contributes to intracellular pH regulation in the duodenal upper villous epithelium during proton-coupled peptide absorption..

Validation Data:

Carbonic anhydrase 2/CA2 Rabbit mAb [1R57] Images



Western blot (SDS PAGE) analysis of extracts from HEK293 cells. Using Carbonic anhydrase 2/CA2 Rabbit mAb [1R57] at dilution of 1:1000 incubated at 4°C over

View more information on <http://naturebios.com>

IMPORTANT: For western blots, incubate membrane with diluted primary antibody in 1% w/v Milk, 1X TBST at 4°C overnight.