

CD40L Rabbit mAb [J8E5]

Cat NO. :A85056

Information:

Applications	Reactivity:	UniProt ID:	MW(kDa)	Host	Isotype	Size
WB	M,R	P27548	36kDa	Rabbit	IgG	50ul,100ul,200ul

Applications detail:

Application	Dilution
WB	1:1000-2000
The optimal dilutions should be determined by the end user	

Conjugate:

UnConjugate

Form:

Liquid

sensitivity:

Endogenous

Purification:

Protein A purification

Specificity:

Antibody is produced by immunizing animals with a synthetic peptide of Mouse CD40L.

Storage buffer and conditions :

Antibody store in 10 mM PBS, 0.5mg/ml BSA, 50% glycerol (buffer) .

Shipped at 4°C. Store at -20°C or -80°C.

Products are valid for one natural year of receipt.Avoid repeated freeze / thaw cycles.

Tissue specificity:

Specifically expressed on activated CD4+ T-lymphocytes.

Subcellular location:

Cell membrane,Single-pass type II membrane protein. Cell surface.,[CD40 ligand, soluble form]: Secreted.

Function:

Cytokine that acts as a ligand to CD40/TNFRSF5 (By similarity). Costimulates T-cell proliferation and cytokine production (By similarity). Its cross-linking on T-cells generates a costimulatory signal which enhances the production of IL4 and IL10 in conjunction with the TCR/CD3 ligation and CD28 costimulation (By similarity). Induces the activation of NF-kappa-B (By similarity). Induces the activation of kinases MAPK8 and PAK2 in T-cells (By similarity). Mediates B-cell proliferation in the absence of co-stimulus as well as IgE production in the presence of IL4 (PubMed:1374165). Involved in immunoglobulin class switching (PubMed:1374165).., [CD40 ligand, soluble form]: Acts as a ligand for integrins, specifically ITGA5:ITGB1 and ITGAV:ITGB3,both integrins

Introduction: **WB:** Western Blot **IP:** Immunoprecipitation **IHC:** Immunohistochemistry **ChIP:** Chromatin Immunoprecipitation **ICC/IF:** Immunocytochemistry/Immunofluorescence **F:** Flow Cytometry

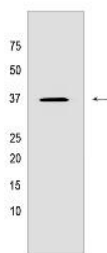
Cross Reactivity: **H:** human **M:** mouse **R:** rat **Hm:** hamster **Mk:** monkey **Vir:** virus **Ml:** mink **C:** chicken **Dm** D. melanogaster **X:** Xenopus **Z:** zebrafish **B:** bovine **Dg:** dog **Pg:** pig **Hr:** horse

For Research Use Only. Not For Use In Diagnostic Procedures.

and the CD40 receptor are required for activation of CD40-CD40LG signaling, which have cell-type dependent effects, such as B-cell activation, NF-kappa-B signaling and anti-apoptotic signaling..

Validation Data:

CD40L Rabbit mAb [J8E5] Images



Western blot (SDS PAGE) analysis of extracts from Mouse liver Tissue lysate. Using CD40L Rabbit mAb [J8E5] at dilution of 1:1000 incubated at 4°C over night.

View more information on <http://naturebios.com>

IMPORTANT: For western blots, incubate membrane with diluted primary antibody in 1% w/v Milk, 1X TBST at 4°C overnight.