

**AFM Mouse mAb[K26I]**

**Cat NO. :A85445**

**Information:**

Applications	Reactivity:	UniProt ID:	MW(kDa)	Host	Isotype	Size
WB,IHC,ICC/IF	H,M	P43652	85kDa	Mouse	IgG	100ul,200ul

**Applications detail:**

Application	Dilution
WB	1:1000-2000
IHC	1:100
ICC/IF	1:100
The optimal dilutions should be determined by the end user	

**Conjugate:**

UnConjugate

**Form:**

Liquid

**sensitivity:**

Endogenous

**Purification:**

Protein A purification

**Specificity:**

Antibody is produced by immunizing animals with a synthetic peptide of human AFM.

**Storage buffer and conditions:**

Antibody store in 10 mM PBS, 0.5mg/ml BSA, 50% glycerol (buffer) .

Shipped at 4°C. Store at -20°C or -80°C.

Products are valid for one natural year of receipt.Avoid repeated freeze / thaw cycles.

**Tissue specificity:**

High level detected in plasma but also in extravascular fluids such as follicular and cerebrospinal fluids (at protein level)..

**Subcellular location:**

Secreted.

**Function:**

**Introduction:** **WB:** Western Blot **IP:** Immunoprecipitation **IHC:** Immunohistochemistry **ChIP:** Chromatin Immunoprecipitation **ICC/IF:** Immunocytochemistry/Immunofluorescence **F:** Flow Cytometry

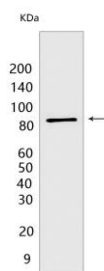
**Cross Reactivity:** **H:** human **M:** mouse **R:** rat **Hm:** hamster **Mk:** monkey **Vir:** virus **Ml:** mink **C:** chicken **Dm** D. melanogaster **X:** Xenopus **Z:** zebrafish **B:** bovine **Dg:** dog **Pg:** pig **Hr:** horse

**For Research Use Only. Not For Use In Diagnostic Procedures.**

Functions as carrier for hydrophobic molecules in body fluids (Probable). Essential for the solubility and activity of lipidated Wnt family members, including WNT1, WNT2B, WNT3, WNT3A, WNT5A, WNT7A, WNT7B, WNT8, WNT9A, WNT9B, WNT10A and WNT10B (PubMed:26902720). Binds vitamin E (PubMed:15952736, PubMed:12463752). May transport vitamin E in body fluids under conditions where the lipoprotein system is not sufficient (PubMed:15952736). May be involved in the transport of vitamin E across the blood-brain barrier (PubMed:19046407)..

## Validation Data:

### AFM Mouse mAb[K26I] Images



Western blot ( SDS PAGE ) analysis of extracts from human plasma tissue. Using AFM Mouse mAb IgG [K26I] at dilution of 1:1000 incubated at 4°C over night.

View more information on <http://naturebios.com>

**IMPORTANT:** For western blots, incubate membrane with diluted primary antibody in 1% w/v Milk, 1X TBST at 4°C overnight.