

CRNKL1 Rabbit mAb [U3R5]

Cat NO. :A92156

Information:

Applications	Reactivity:	UniProt ID:	MW(kDa)	Host	Isotype	Size
WB,IHC,ICC/IF	H,R	Q9BZJ0	100 kDa	Rabbit	IgG	50ul,100ul,200ul

Applications detail:

Application	Dilution
WB	1:1000-2000
IHC	1:100,
ICC/IF	1:100,
The optimal dilutions should be determined by the end user	

Conjugate:

UnConjugate

Form:

Liquid

sensitivity:

Endogenous

Purification:

Protein A purification

Specificity:

Antibody is produced by immunizing animals with a synthetic peptide of Human CRNKL1.

Storage buffer and conditions:

Antibody store in 10 mM PBS, 0.5mg/ml BSA, 50% glycerol (buffer) .

Shipped at 4°C. Store at-20°C or -80°C.

Products are valid for one natural year of receipt.Avoid repeated freeze / thaw cycles.

Tissue specificity:

Widely expressed (PubMed:11342225). Highly expressed in testis (PubMed:12084575). Not detected in brain and lung (PubMed:12084575)..

Subcellular location:

Nucleus. Nucleus speckle.

Function:

Introduction: **WB:** Western Blot **IP:** Immunoprecipitation **IHC:** Immunohistochemistry **ChIP:** Chromatin Immunoprecipitation **ICC/IF:** Immunocytochemistry/Immunofluorescence **F:** Flow Cytometry

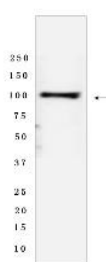
Cross Reactivity: **H:** human **M:** mouse **R:** rat **Hm:** hamster **Mk:** monkey **Vir:** virus **Ml:** mink **C:** chicken **Dm** D. melanogaster **X:** Xenopus **Z:** zebrafish **B:** bovine **Dg:** dog **Pg:** pig **Hr:** horse

For Research Use Only. Not For Use In Diagnostic Procedures.

Involved in pre-mRNA splicing process..

Validation Data:

CRNKL1 Rabbit mAb [U3R5] Images



Western blot (SDS PAGE) analysis of extracts from Human seminoma tissue lyaste.using CRNKL1 Rabbit mAb [U3R5] at dilution of 1:1000 incubated at 4°C over

View more information on <http://naturebios.com>

IMPORTANT: For western blots, incubate membrane with diluted primary antibody in 1% w/v Milk, 1X TBST at 4°C overnight.

For Research Use Only. Not For Use In Diagnostic Procedures.