

LSM5 Rabbit mAb [M621]

Cat NO. :A94096

Information:

Applications	Reactivity:	UniProt ID:	MW(kDa)	Host	Isotype	Size
WB,IHC,ICC/IF	H	Q9Y4Y9	10 kDa	Rabbit	IgG	100ul,200ul

Applications detail:

Application	Dilution
WB	1:1000-2000
IHC	1:100,
ICC/IF	1:100,
The optimal dilutions should be determined by the end user	

Conjugate:

UnConjugate

Form:

Liquid

sensitivity:

Endogenous

Purification:

Protein A purification

Specificity:

Antibody is produced by immunizing animals with a synthetic peptide of Human LSM5.

Storage buffer and conditions:

Antibody store in 10 mM PBS, 0.5mg/ml BSA, 50% glycerol (buffer) .

Shipped at 4°C. Store at-20°C or -80°C.

Products are valid for one natural year of receipt.Avoid repeated freeze / thaw cycles.

Tissue specificity:

Subcellular location:

Nucleus.

Function:

Plays role in pre-mRNA splicing as component of the U4/U6-U5 tri-snRNP complex that is involved in spliceosome assembly, and as component of the precatalytic spliceosome (spliceosome B complex) (PubMed:28781166). The heptameric LSM2-8 complex binds specifically to the 3'-terminal U-tract of U6 snRNA (PubMed:10523320)..

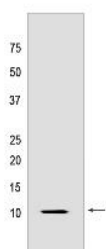
Introduction: **WB:** Western Blot **IP:** Immunoprecipitation **IHC:** Immunohistochemistry **ChIP:** Chromatin Immunoprecipitation **ICC/IF:** Immunocytochemistry/Immunofluorescence **F:** Flow Cytometry

Cross Reactivity: **H:** human **M:** mouse **R:** rat **Hm:** hamster **Mk:** monkey **Vir:** virus **Ml:** mink **C:** chicken **Dm** D. melanogaster **X:** Xenopus **Z:** zebrafish **B:** bovine **Dg:** dog **Pg:** pig **Hr:** horse

For Research Use Only. Not For Use In Diagnostic Procedures.

Validation Data:

LSM5 Rabbit mAb [M621] Images



Western blot (SDS PAGE) analysis of extracts from T47-D cells lysates using LSM5 Rabbit mAb [M621] at dilution of 1:1000 incubated at 4°C overnight

View more information on <http://naturebios.com>

IMPORTANT: For western blots, incubate membrane with diluted primary antibody in 1% w/v Milk, 1X TBST at 4°C overnight.