

MRPS27 Mouse mAb[FCQA]

Cat NO. :A94767

Information:

Applications	Reactivity:	UniProt ID:	MW(kDa)	Host	Isotype	Size
WB,IHC	H	Q92552	48kDa	Mouse	IgG	100ul,200ul

Applications detail:

Application	Dilution
WB	1:1000-2000
IHC	1:100
The optimal dilutions should be determined by the end user	

Conjugate:

UnConjugate

Form:

Liquid

sensitivity:

Endogenous

Purification:

Protein A purification

Specificity:

Antibody is produced by immunizing animals with a synthetic peptide of human MRPS27.

Storage buffer and conditions:

Antibody store in 10 mM PBS, 0.5mg/ml BSA, 50% glycerol (buffer) .

Shipped at 4°C. Store at -20°C or -80°C.

Products are valid for one natural year of receipt.Avoid repeated freeze / thaw cycles.

Tissue specificity:

Overexpressed in hepatocellular carcinoma tissues compared with adjacent non-tumoral liver tissues (at protein level) (PubMed:28714366). Ubiquitous (PubMed:22841715)..

Subcellular location:

Cytoplasm. Mitochondrion.

Function:

Introduction: **WB:** Western Blot **IP:** Immunoprecipitation **IHC:** Immunohistochemistry **ChIP:** Chromatin Immunoprecipitation **ICC/IF:** Immunocytochemistry/Immunofluorescence **F:** Flow Cytometry

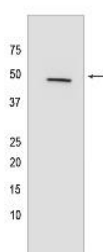
Cross Reactivity: **H:** human **M:** mouse **R:** rat **Hm:** hamster **Mk:** monkey **Vir:** virus **Ml:** mink **C:** chicken **Dm** D. melanogaster **X:** Xenopus **Z:** zebrafish **B:** bovine **Dg:** dog **Pg:** pig **Hr:** horse

For Research Use Only. Not For Use In Diagnostic Procedures.

RNA-binding component of the mitochondrial small ribosomal subunit (mt-SSU) that plays a role in mitochondrial protein synthesis (PubMed:22841715). Stimulates mitochondrial mRNA translation of subunit components of the mitochondrial electron transport chain (PubMed:22841715). Binds to the mitochondrial 12S rRNA (12S mt-rRNA) and tRNA(Glu) (PubMed:22841715). Involved also in positive regulation of cell proliferation and tumor cell growth (PubMed:28714366)..

Validation Data:

MRPS27 Mouse mAb[FCQA] Images



Western blot (SDS PAGE) analysis of extracts from LNCaP cells. Using MRPS27 Mouse mAb IgG [FCQA] at dilution of 1:1000 incubated at 4°C over night.

View more information on <http://naturebios.com>

IMPORTANT: For western blots, incubate membrane with diluted primary antibody in 1% w/v Milk, 1X TBST at 4°C overnight.