

**Importin 9/RANBP9 Rabbit mAb [9768]**

**Cat NO. :A96320**

**Information:**

Applications	Reactivity:	UniProt ID:	MW(kDa)	Host	Isotype	Size
WB,IHC	H,M,R	Q96P70	125 kDa	Rabbit	IgG	100ul,200ul

**Applications detail:**

Application	Dilution
WB	1:1000-2000
IHC	1:100
The optimal dilutions should be determined by the end user	

**Conjugate:**

UnConjugate

**Form:**

Liquid

**sensitivity:**

Endogenous

**Purification:**

Protein A purification

**Specificity:**

Antibody is produced by immunizing animals with a synthetic peptide at the sequence of human Importin 9/RANBP9

**Storage buffer and conditions:**

Antibody store in 10 mM PBS, 0.5mg/ml BSA, 50% glycerol (buffer) .

Shipped at 4°C. Store at -20°C or -80°C.

Products are valid for one natural year of receipt.Avoid repeated freeze / thaw cycles.

**Tissue specificity:**

**Subcellular location:**

Cytoplasm. Nucleus.

**Function:**

Nuclear transport receptor that mediates nuclear import of proteins, such as histones, proteasome and actin (PubMed:11823430, PubMed:34711951, PubMed:30855230). Serves as receptor for nuclear localization signals (NLS) in cargo substrates (PubMed:11823430). Is thought to mediate docking of the importin/substrate complex to the nuclear pore complex (NPC) through binding to nucleoporin and the complex is subsequently translocated through the pore by an energy requiring, Ran-dependent mechanism (PubMed:11823430). At the nucleoplasmic side of the NPC, Ran binds to the importin, the importin/substrate complex dissociates and importin is re-exported from the nucleus to the cytoplasm where GTP hydrolysis releases Ran (PubMed:11823430). The

**Introduction:** **WB:** Western Blot **IP:** Immunoprecipitation **IHC:** Immunohistochemistry **ChIP:** Chromatin Immunoprecipitation **ICC/IF:** Immunocytochemistry/Immunofluorescence **F:** Flow Cytometry

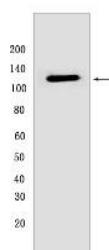
**Cross Reactivity:** **H:** human **M:** mouse **R:** rat **Hm:** hamster **Mk:** monkey **Vir:** virus **Ml:** mink **C:** chicken **Dm:** D. melanogaster **X:** Xenopus **Z:** zebrafish **B:** bovine **Dg:** dog **Pg:** pig **Hr:** horse

**For Research Use Only. Not For Use In Diagnostic Procedures.**

directionality of nuclear import is thought to be conferred by an asymmetric distribution of the GTP- and GDP-bound forms of Ran between the cytoplasm and nucleus (PubMed:11823430). Mediates the import of pre-assembled proteasomes into the nucleus, AKIRIN2 acts as a molecular bridge between IPO9 and the proteasome complex (PubMed:11823430, PubMed:34711951). Mediates the nuclear import of histones H2A, H2B, H4 and H4 (PubMed:11823430, PubMed:30855230). In addition to nuclear import, also acts as a chaperone for histones by preventing inappropriate non-nucleosomal interactions (PubMed:30855230). Mediates the nuclear import of actin (By similarity)..

## Validation Data:

### Importin 9/RANBP9 Rabbit mAb [9768] Images



Western blot ( SDS PAGE ) analysis of extracts from SKBR-3. Using Importin 9/RANBP9 Rabbit mAb [9768] at dilution of 1:1000 incubated at 4°C over night.

View more information on <http://naturebios.com>

**IMPORTANT:** For western blots, incubate membrane with diluted primary antibody in 1% w/v Milk, 1X TBST at 4°C overnight.